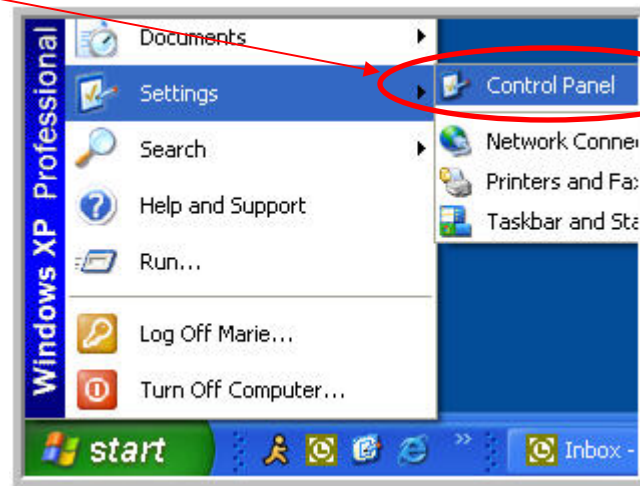
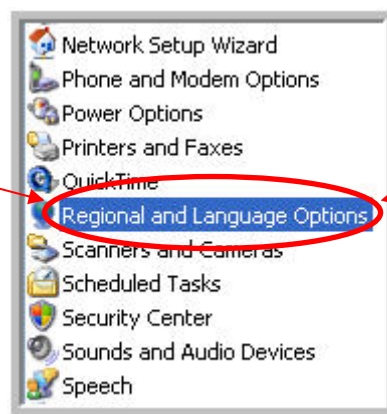


How to Fix the Date Error when Entering a Student Born in the early 1900's

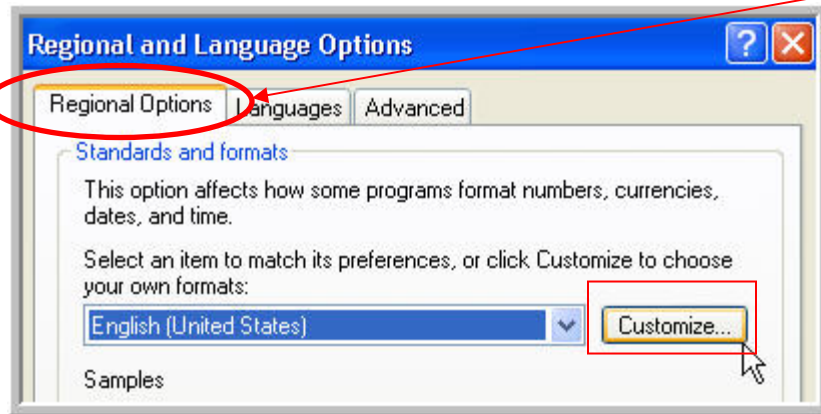
- From your desktop, click on Start → Settings → Control Panel (you may be able to just go to Start and then Control Panel, depending on how your computer is set up)



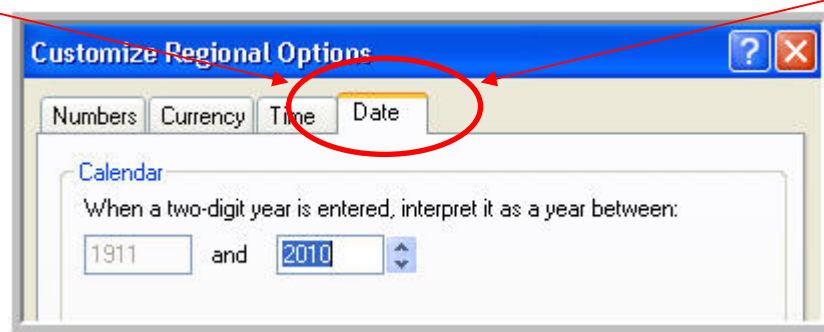
- Double-click on Regional and Language Options OR Double-click on date, time, language and regional options → Regional and Language Options (this also depends on your computer's settings)



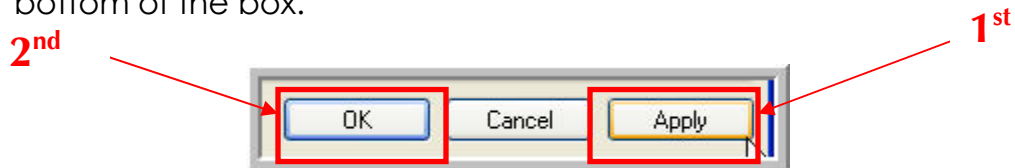
- This will bring up a Regional and Language Options box.
- Make sure you are on the Regional Options tab and click Customize.



- This will bring up a Customize Regional Options box.
- Left-click on the Date tab.



- Toward the top of this page, you will see a Calendar section. You can adjust the years by clicking on the up or down arrows that are next to the most recent year. Set the most recent year to 2010.
- Once you make the changes, click on Apply and then OK at the bottom of the box.



- If you have any questions or problems, please feel free to contact technical support by calling **1-800-765-2897 x20765** or emailing ablelink@literacy.kent.edu.